

January 27/28, 2025

Welcome to the:

M. Sargent



$u^b$

---

b  
UNIVERSITÄT  
BERN

SKACH Winter  
Consortium  
Meeting 2025

S. Wampfler

# Logistics & Thanks

Thanks to: Inst. of Geography for hosting us (esp. S. Saliba for IT support)

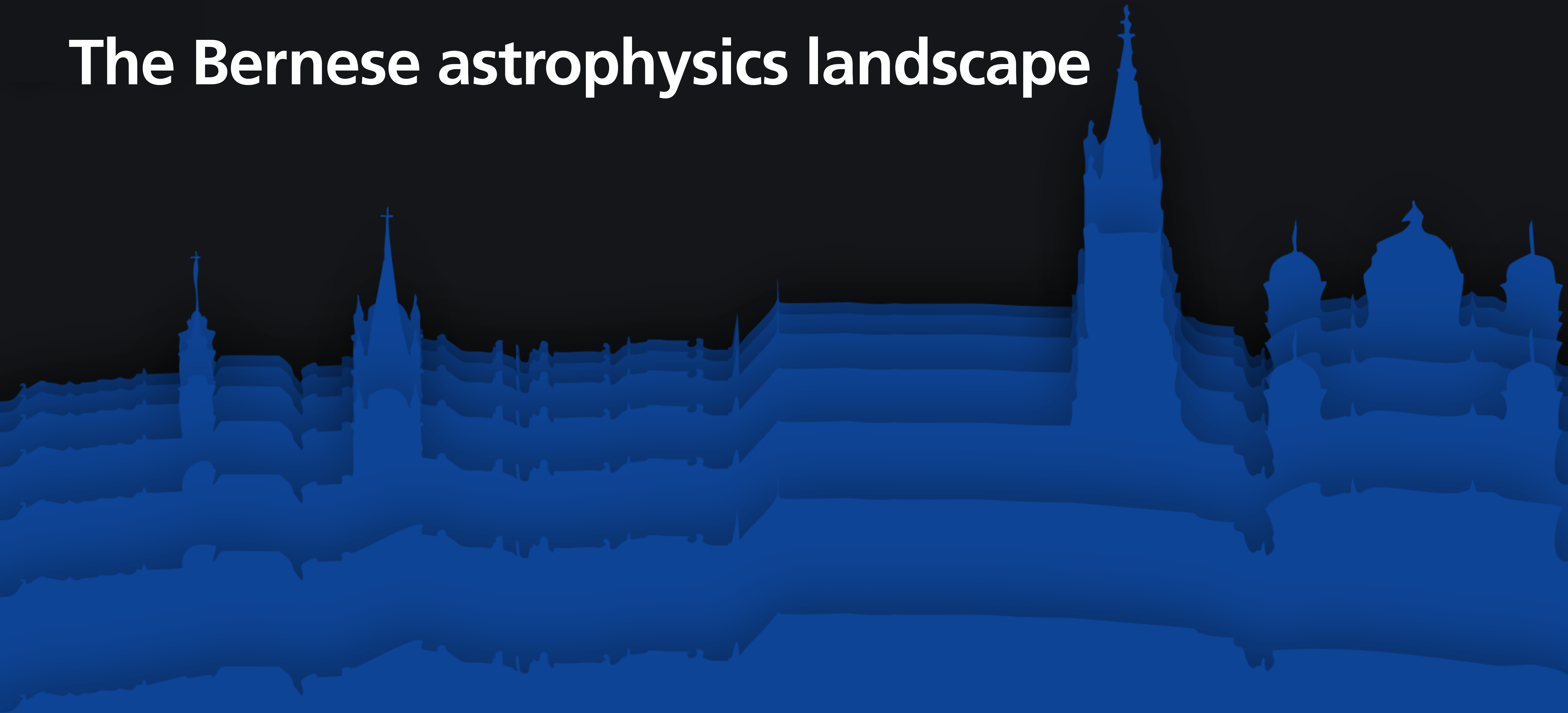
WiFi networks: *eduroam*, or *public-unibe* (for latter, see handouts with access code)

Lunch: Rest. "Grosse Schanze"

*Directions ->*



# The Bernese astrophysics landscape



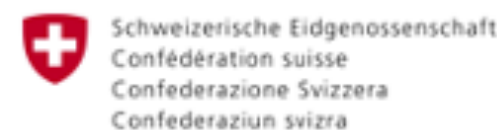
# The International Space Science Institute (ISSI)

ISSI is a non-profit foundation which sponsors scientific meetings and collaborative research.

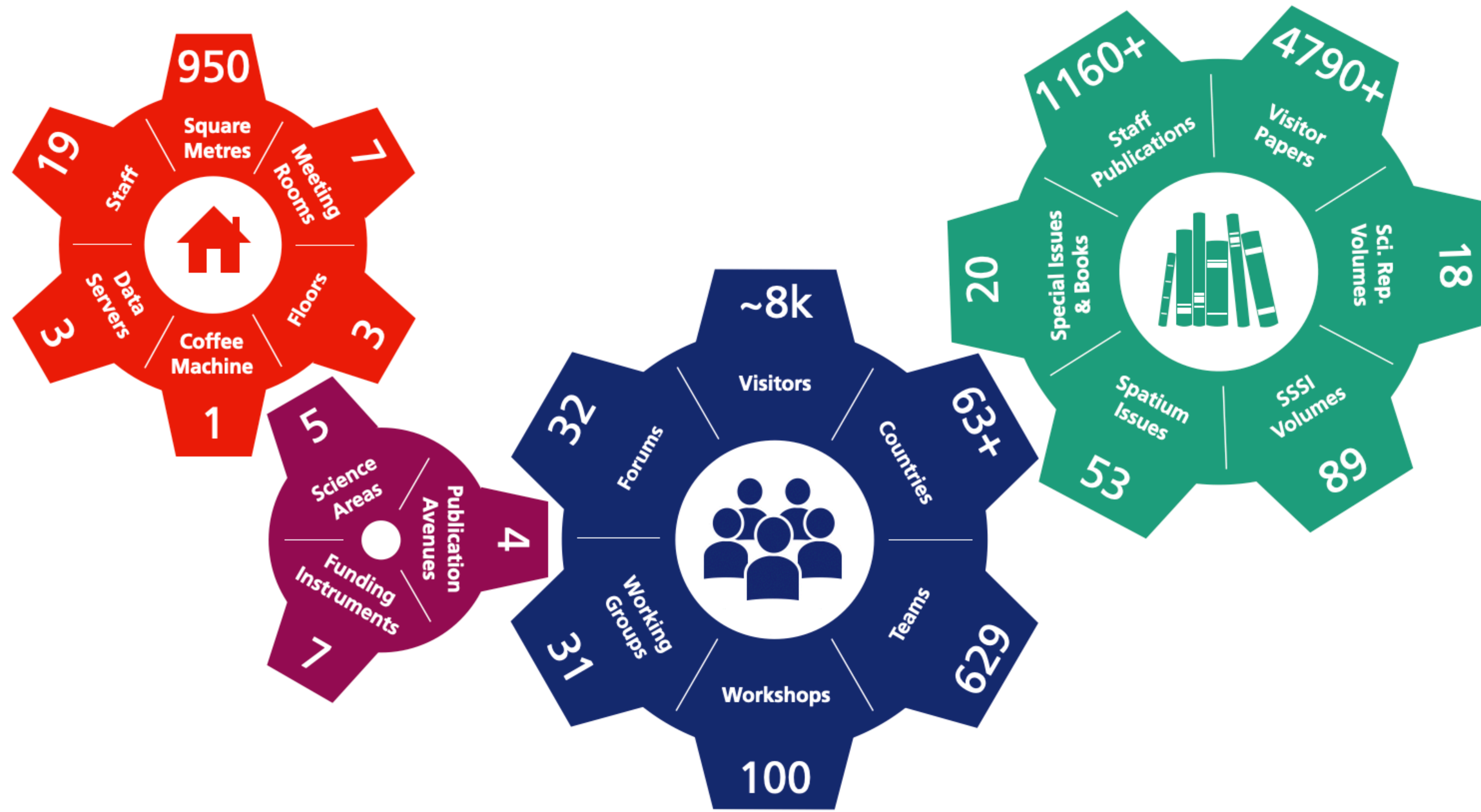
ISSI-sponsored research is (almost) Universe-al(l): from remote sensing for Earth observation, to solar system bodies, and all the way to Early Universe processes.

ISSI staff takes care of meeting logistics - **you focus on the science** with your collaborators.

ISSI is grateful for the support received from its funders and partners:

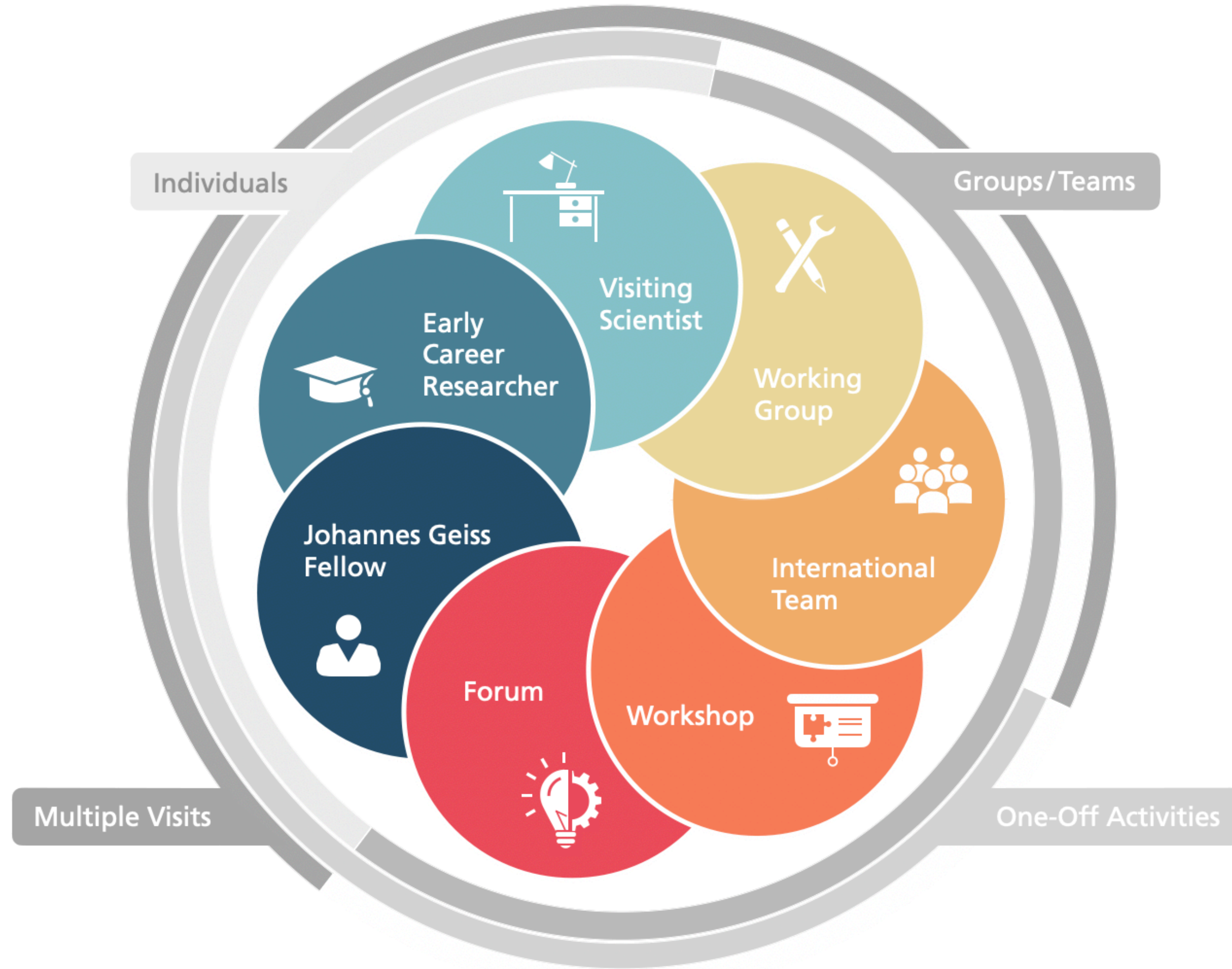


# ISSI - A Mechanism for Knowledge Generation

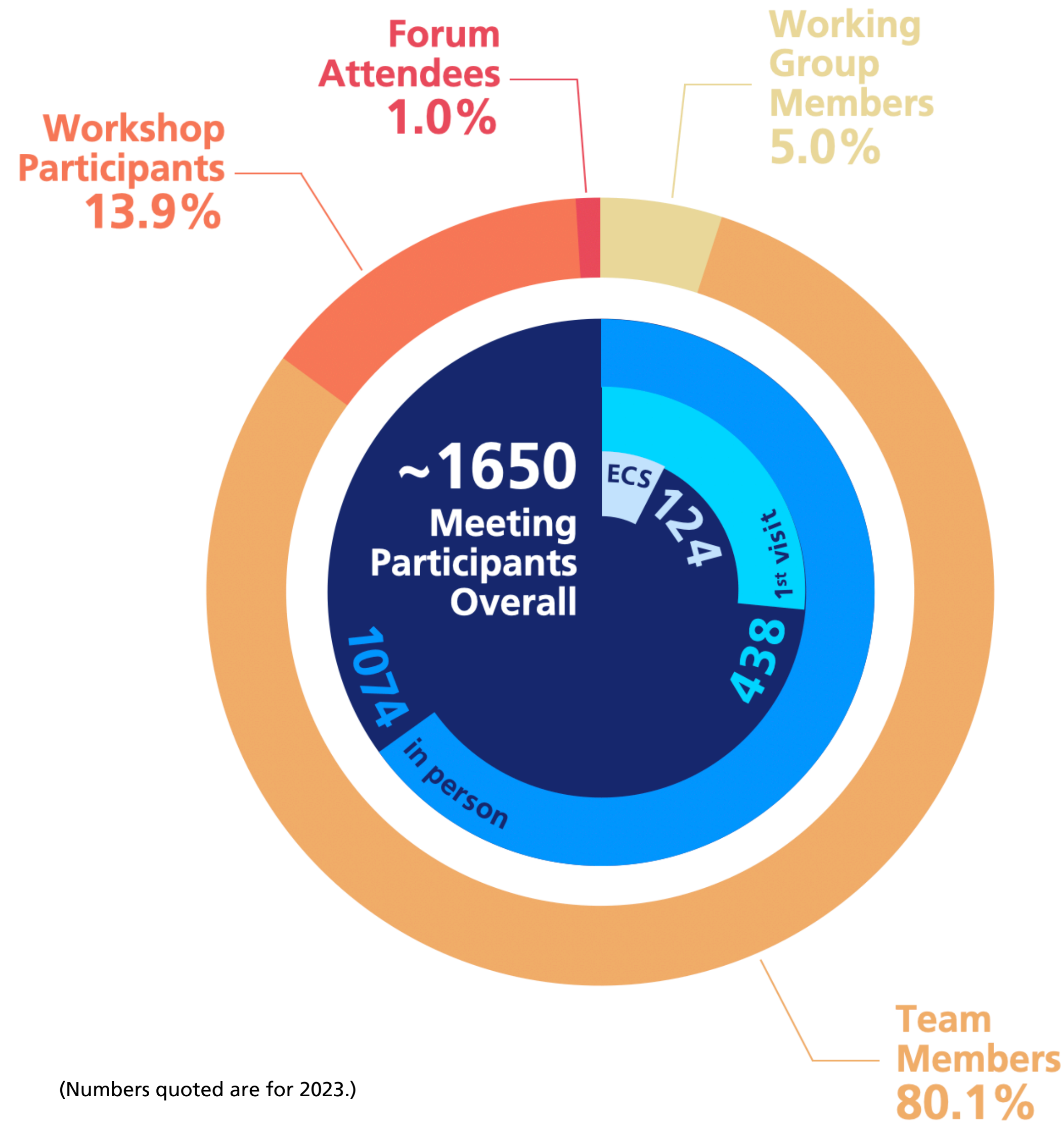




# ISSI's 7 Community Support Instruments



# ISSI is for you too!



Community proposals welcome for all types of ISSI networking activities!

See here:



Upcoming opportunities:

- International Team proposals: **March 13**
- Visiting Scientist program: **March 1**



# The University of Bern

## In a nutshell

Roots of the University of Bern go back to 16<sup>th</sup> century. It is a “complete” university (universitas litterarum):

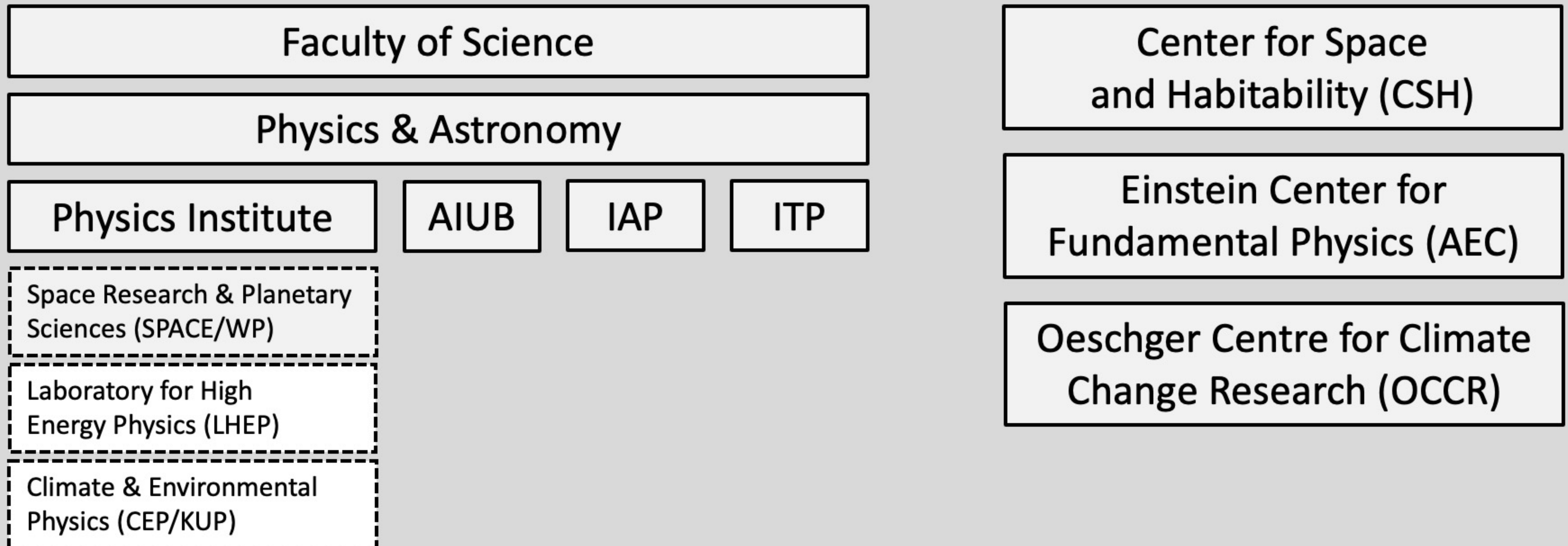
- 8 faculties
- around 150 institutes
- 10 interdisciplinary centers of competence
- 19'600 students
- over 500 professors
- around 2500 postdocs and PhD students





# Physics at the University of Bern

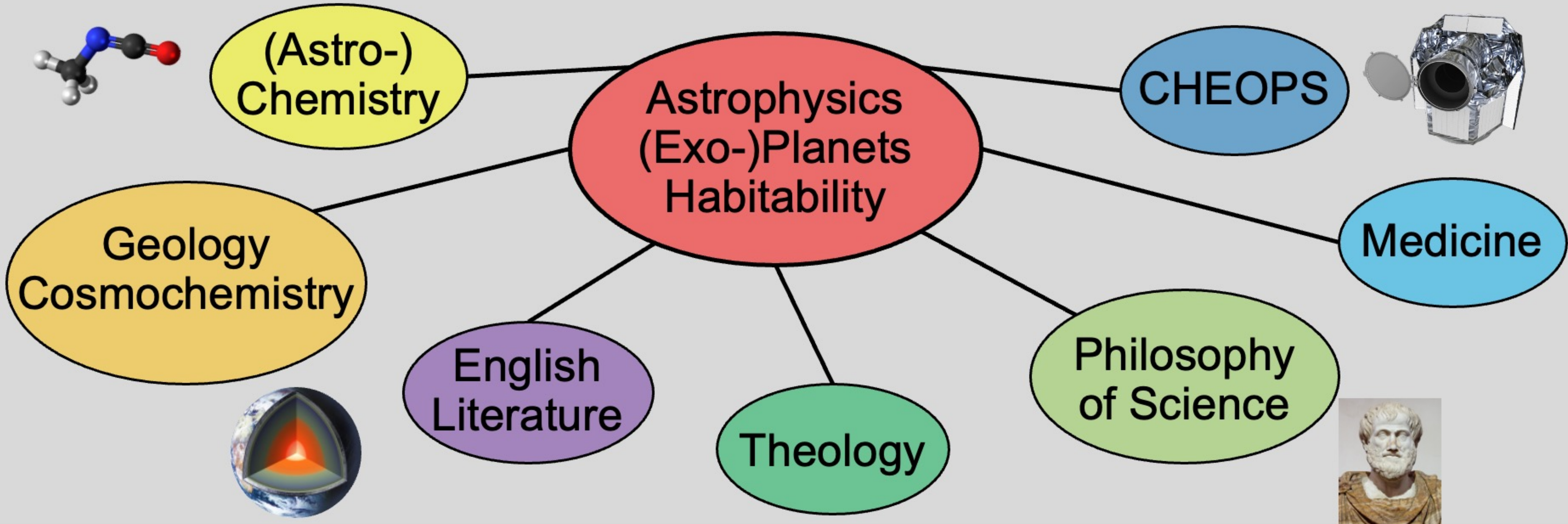
## with a focus on Astrophysics & Planetary Sciences





# Center for Space and Habitability

Multidisciplinary research on planetary habitability





**Enjoy the meeting!**

