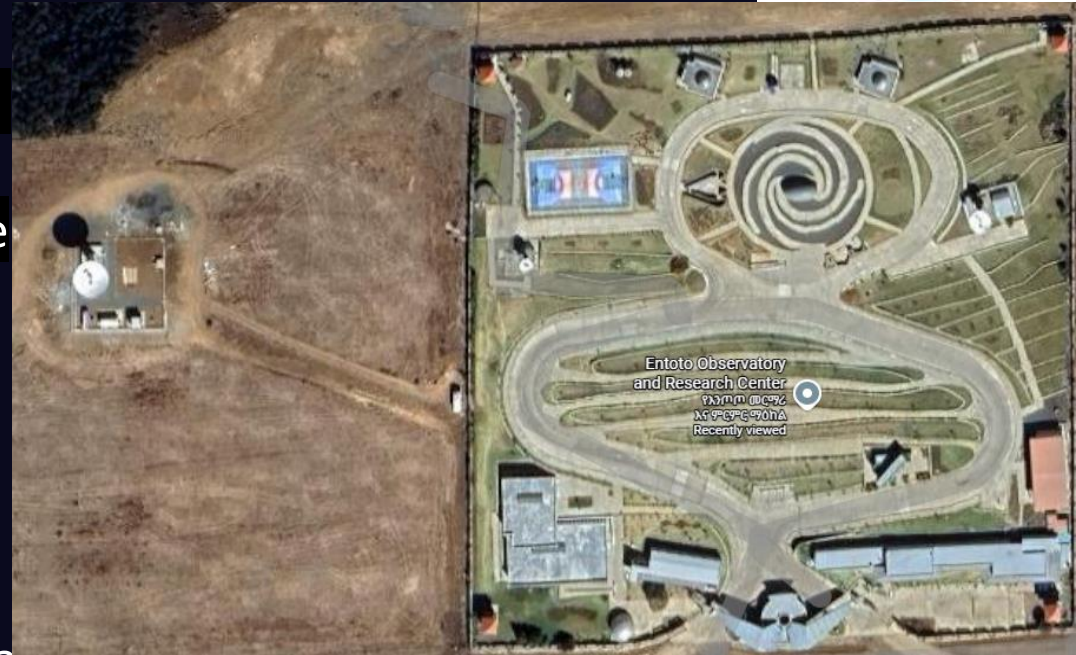


Biruk Abrham – bab3590@gmail.com,
+251998299390
Space Science and Geospatial Institute

- Entoto Observatory:** Located at **3200 meters above sea level** near Addis Ababa and established in 2016.
- The observatory hosts twin 1-m telescopes for research and training.
 - Three ground station for satellites data receiving
 - City expansion increases artificial skyglow ALAN, reducing limiting magnitude.

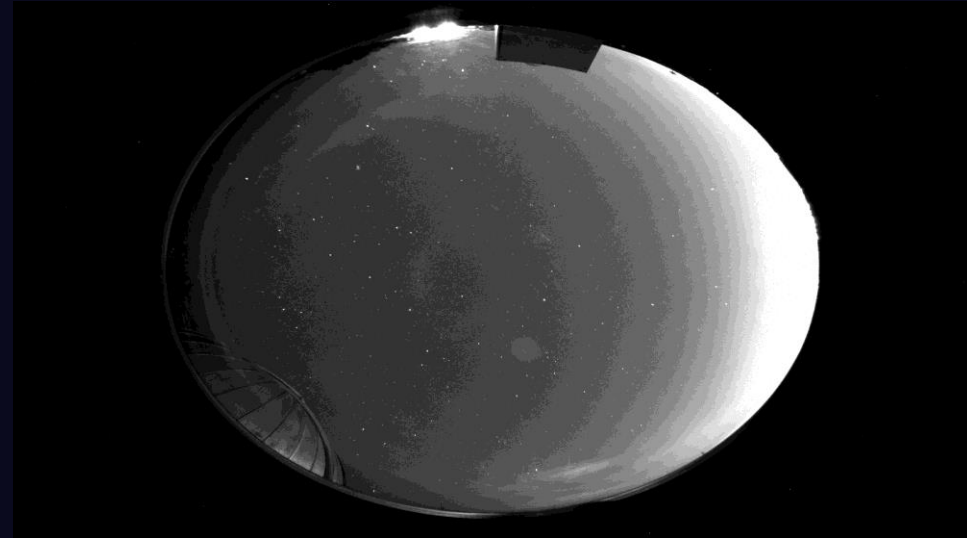


Assessing and Quantifying Urban Skyglow

- A Sky Quality Meter (SQM) reading reveal 16 a very **bright, light-polluted sky**.

- **Satellite Interference:**

Satellite streaks are recorded in long-exposure CCD frames, but their frequency is low comparing to **ALAN** from **Addis Ababa** and **sululta** remains the **dominant limiting factor for photometry**.



Toward Sustainable Dark-Sky Protection

- Proposal: Pilot Dark-Sky Protection Initiative with local authorities.
- Seeking partners for lighting audits, modeling tools, and policy frameworks.
- possible Astronomical site to relocate the telescopes

Mitigation Necessity: Both terrestrial light and satellite interference require urgent, coordinated mitigation strategies to preserve the observatory's scientific productivity.



Thank you

አመሰግናለሁ::

Biruk Abrham – bab3590@gmail.com,
+251998299390

