

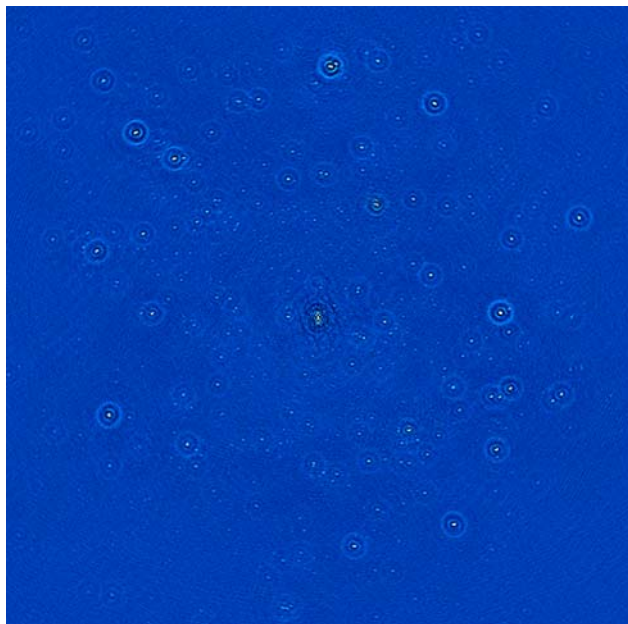
Processing steps

- analog beamforming (optional)
- digital beamforming
- station calibration
- delay tracking
- fringe stopping
- correlation / tied array processing
- flagging, averaging, ...
- calibration
- imaging

Advantages of AA's

- Flexibility
 - trade BW for beams for bits
 - freedom to place your beams within (wide) tile FoV
- Wide Field of View
 - Using multiple smaller sized station beams
- Minimizing of correlator and central processing resources as a function of station size
- Small station beams, unblocked apertures, and good stability all ease the central calibration task

Salisbury Astronomy Productions

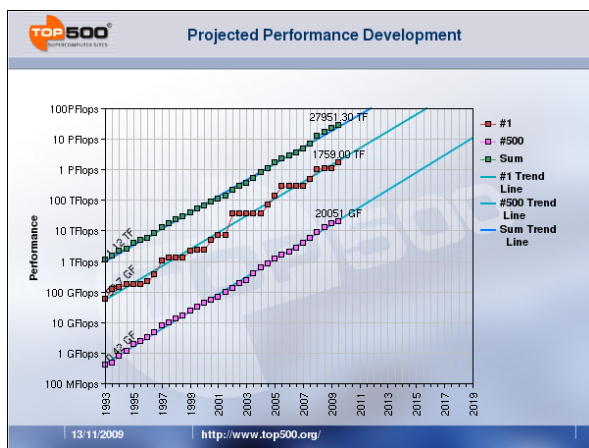


LOFAR HBA

- High DR
- Polarization purity (after calibration)

Embrace / AAVP

- SKA mid freq range



Climbing Mount ExaFlop

- ExaFlop/s
- High I/O bandwidth
- Scaling of algorithms
- Power consumption