



REGIONAL
CENTRE
NETWORK

The SRC Development Timeline

Rosie Bolton

Head of Data Operations group, SKAO
SRCNet Product Manager

13/09/2022

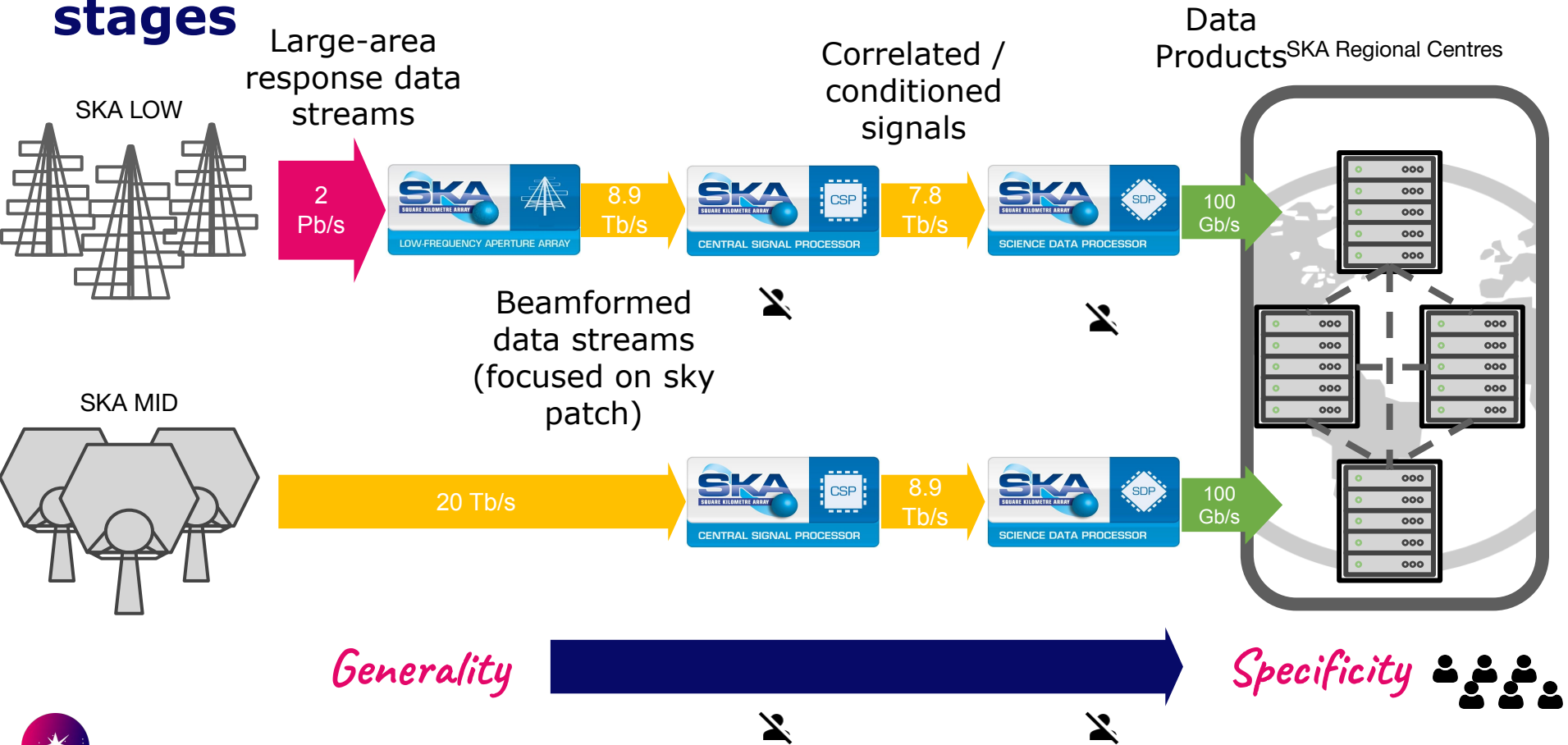
With some slide material from Rohini Joshi and Jesús Salgado

The SRC Vision

"To ensure that scientists can access SKA data products and use them to make discoveries"

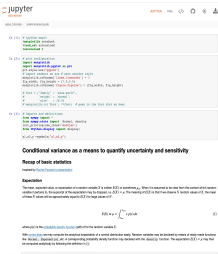


SKA Regional Centres: SKAO data processing stages

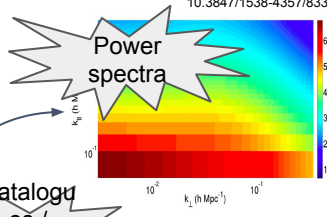


SRCs: Collaboration platform, Support data reuse

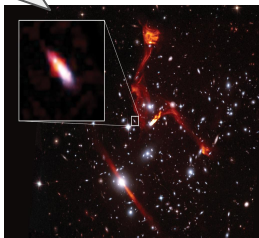
Workflows



Paul, Sourabh et al. (2016). ApJ 833. 10.3847/1538-4357/833/2/213.

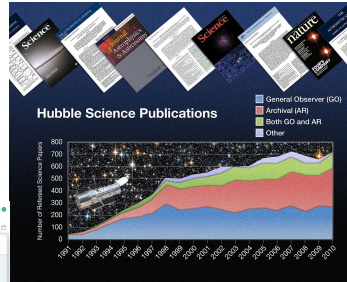
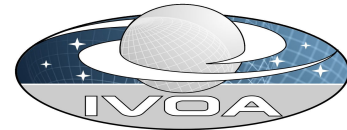
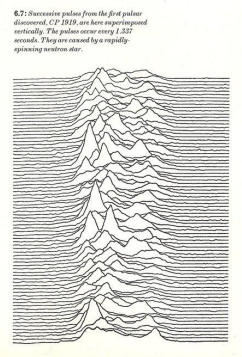
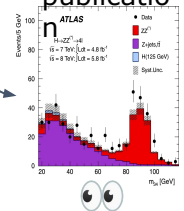


Catalogues / Source List



Credit: Heywood et al.; Sophia Dagnello, NRAO/AUI/N

Plots for publication



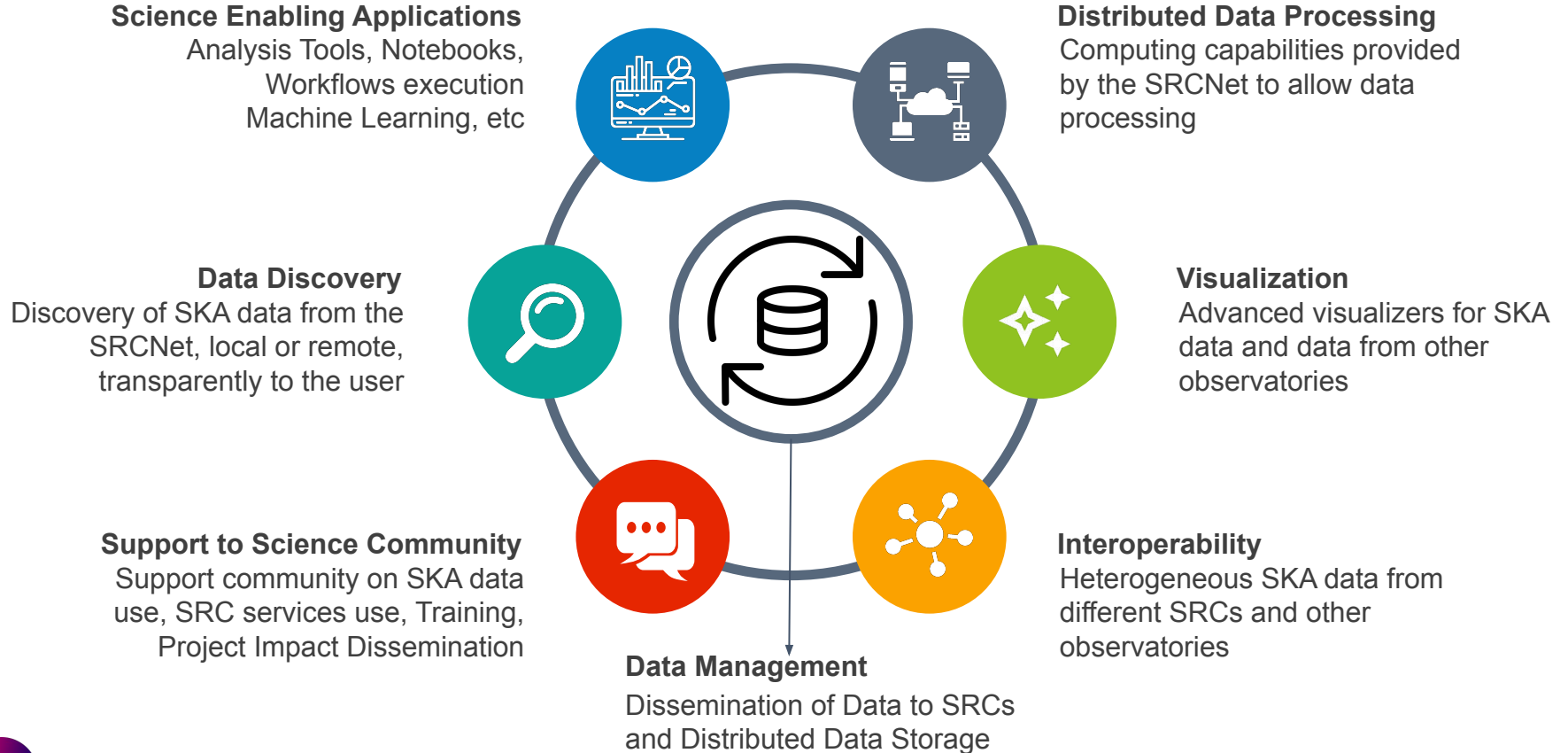
Name	RA, J2000	DEC, J2000	TYPE
1	13295972547197	0.3000	263
2	110.75	0.3000	350
3	106.829697702648	0.3000	240
4	110.509697556975	0.3000	395
5	190.40005910331562	0.3000	369
6	97.939997556975	0.3000	395
7	143.309697556975	0.3000	409
8	93.33999733789062	0.3000	416
9	93.80000048839125	0.3000	403

FAIR principles (Find, Access, Interoperate, Re-use)

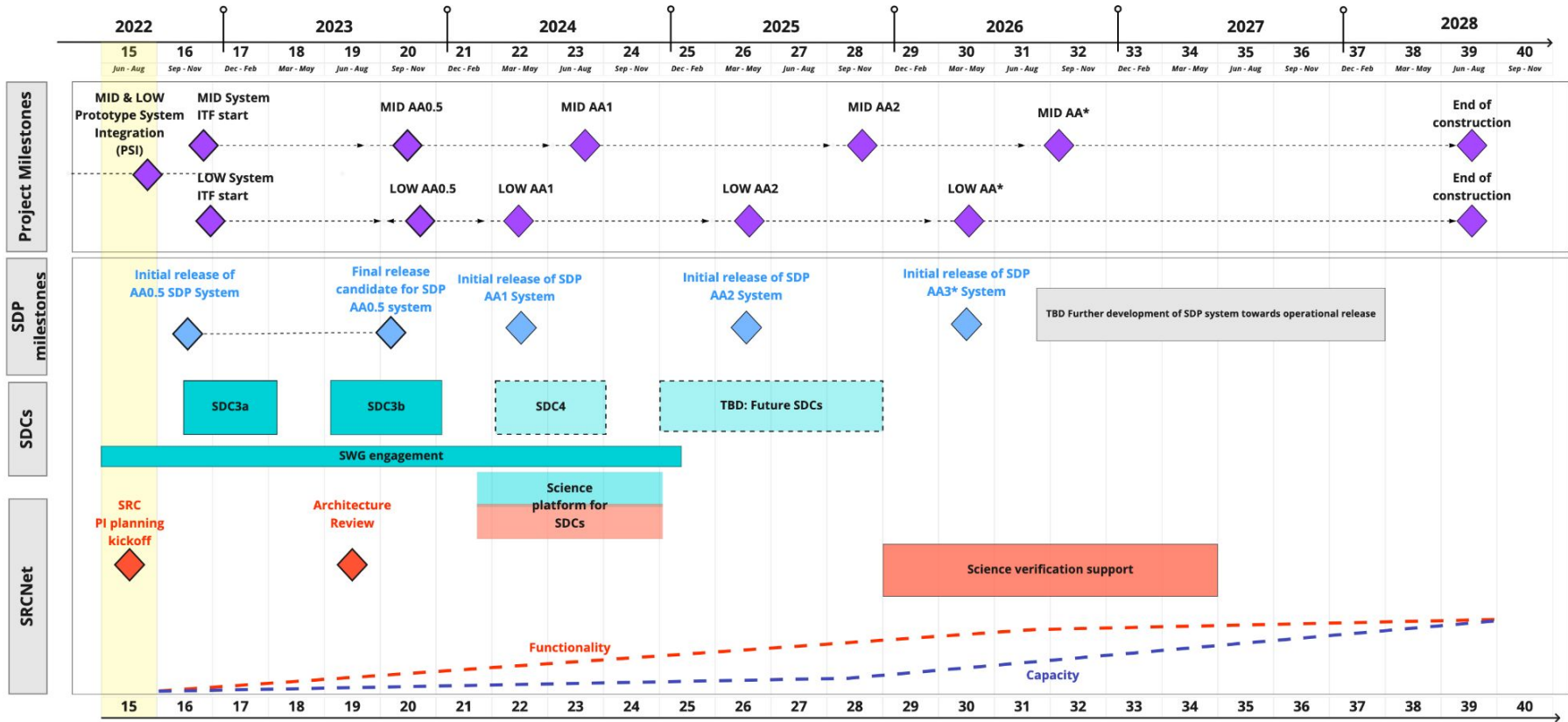
Example from <https://cartavis.org/>



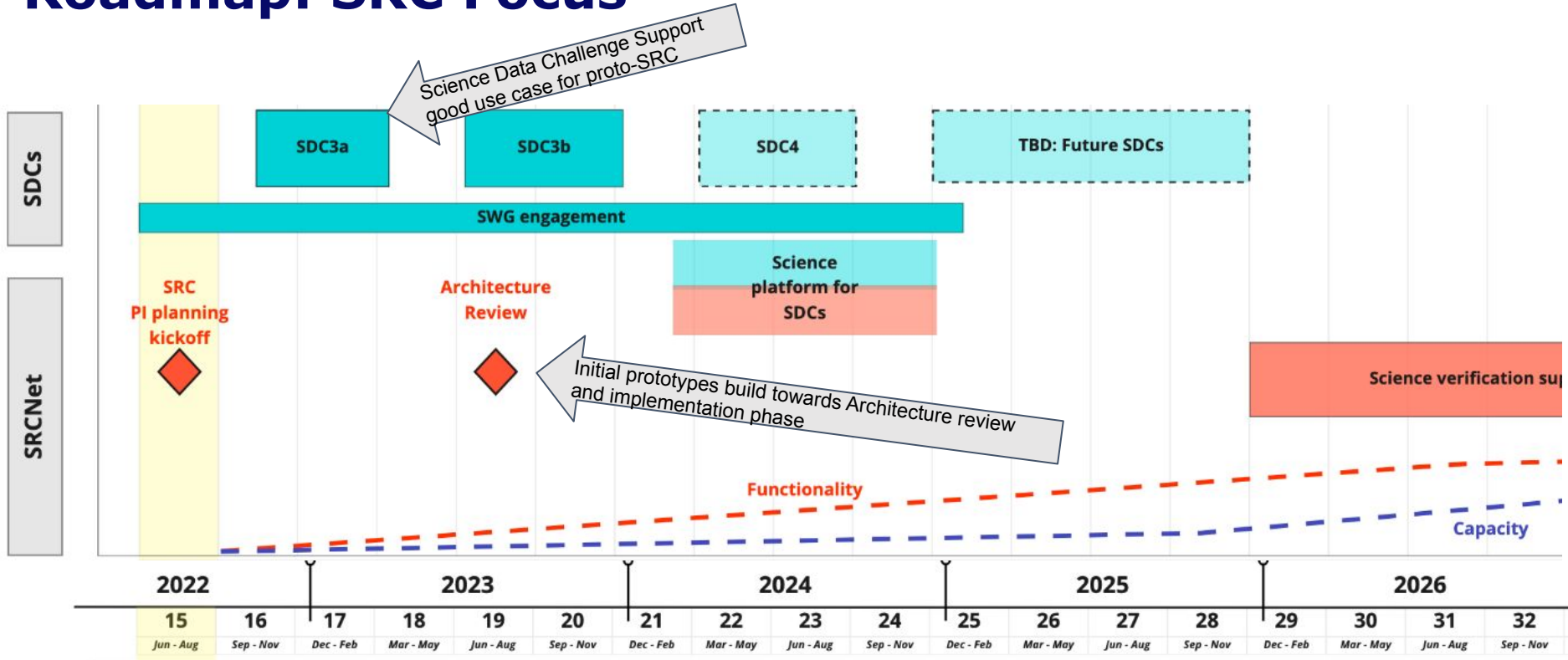
SKA Regional Centre Capabilities



Roadmap



Roadmap: SRC Focus



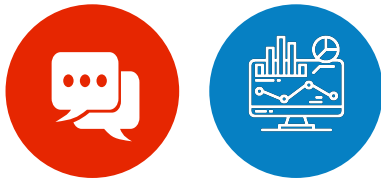
First Prototyping Phase: 2022-2023

Data Management service:

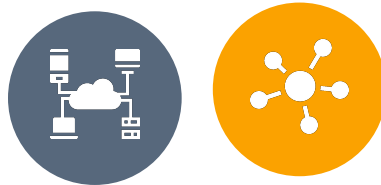
Replication, distribution, synchronisation of data products and location index



Data Analysis: Science Extraction, Processing in Notebooks



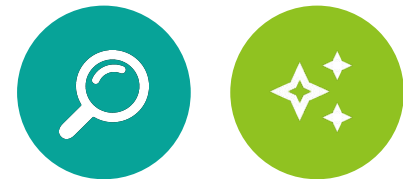
Central Services and Software Distribution: SW infrastructure, compute provision



Federated **Authentication and Authorization:** identity management, compatible with SKAO



Data Visualisation and discovery - performance at SKA scale



Progress - Data Management



Rucio: <https://rucio.cern.ch/>

Src\Dst	Transfer success site matrix				
	SPSRC_STORM	IMPERIAL	CNAF	AUSSRC_STORM	STFC_STORM
STFC_STORM	97%	89%	100%	99%	NO DATA
SPSRC_STORM	NO DATA	91%	100%	99%	27%
IMPERIAL	98%	NO DATA	100%	99%	39%
CNAF	98%	93%	NO DATA	99%	34%
AUSSRC_STORM	84%	91%	100%	NO DATA	31%

Upgraded Rucio (global distributed data management service) instance to use tokens for Authentication

Successfully integrated storage in Spanish SRC (Granada) and Australian SRC (Perth) into existing system

Improved monitoring - rich (extensible) dashboard and supporting database and slack integration

skao-datalake-robot

- Status: ●
- Event count: Thursday, 1 September
- Success ratio: 0%

Create JIRA ticket

skao-datalake-robot APP 16:45
transfer matrix 01-09-2022

Src\Dst	SPSRC_STORM	IMPERIAL	CNAF	AUSSRC_STORM	STFC_STORM
STFC_STORM	97%	89%	100%	99%	NO DATA
SPSRC_STORM	NO DATA	91%	100%	99%	27%
IMPERIAL	98%	NO DATA	100%	99%	39%
CNAF	98%	93%	NO DATA	99%	34%
AUSSRC_STORM	84%	91%	100%	NO DATA	31%

Rob Barnsley 16:58
added an integration to this channel: skao-datalake-robot

skao-datalake-robot APP 16:58
Last 24h Report (dev) (01-09-2022)

Go to dashboard Email report



Progress - Identity management (Authentication and Authorisation)

- "IAM"* service deployed in UK (Rutherford Appleton Lab)
<https://ska-iam.stfc.ac.uk/login>
- Landscape report created ready for wider sharing and feedback

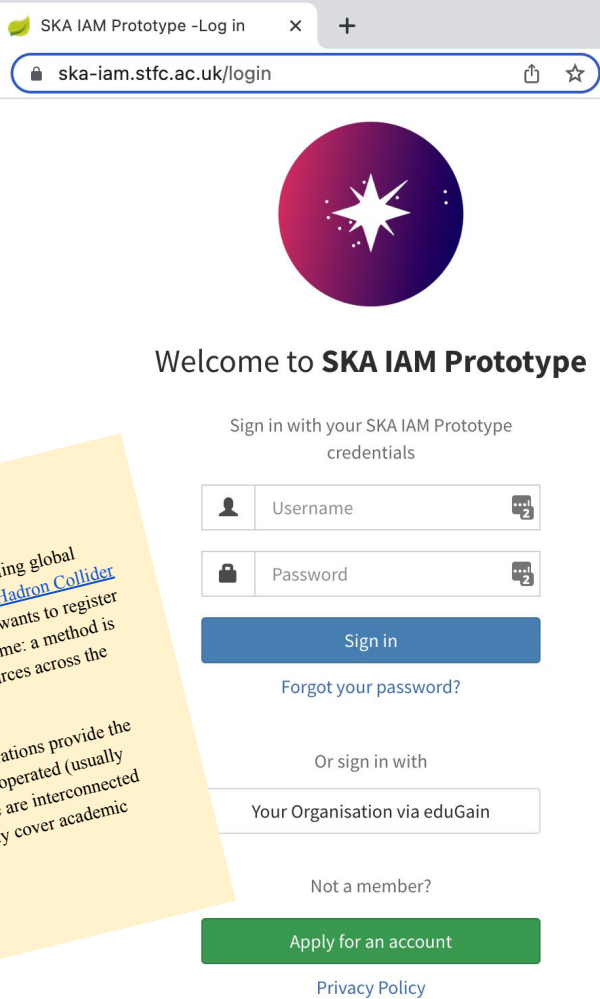
*<https://indigo-iam.github.io/docs/v/current/about.html>

Executive Summary

Science has large scale research activities that require pooling global computing and data storage resources, such as the [Large Hadron Collider](#) (WLCG), [climate research](#), and [NGS](#). Naturally no one wants to register with every remote service with a new password every time: a method is needed to connect the user's existing identities to resources across the world, possibly in different trust domains.

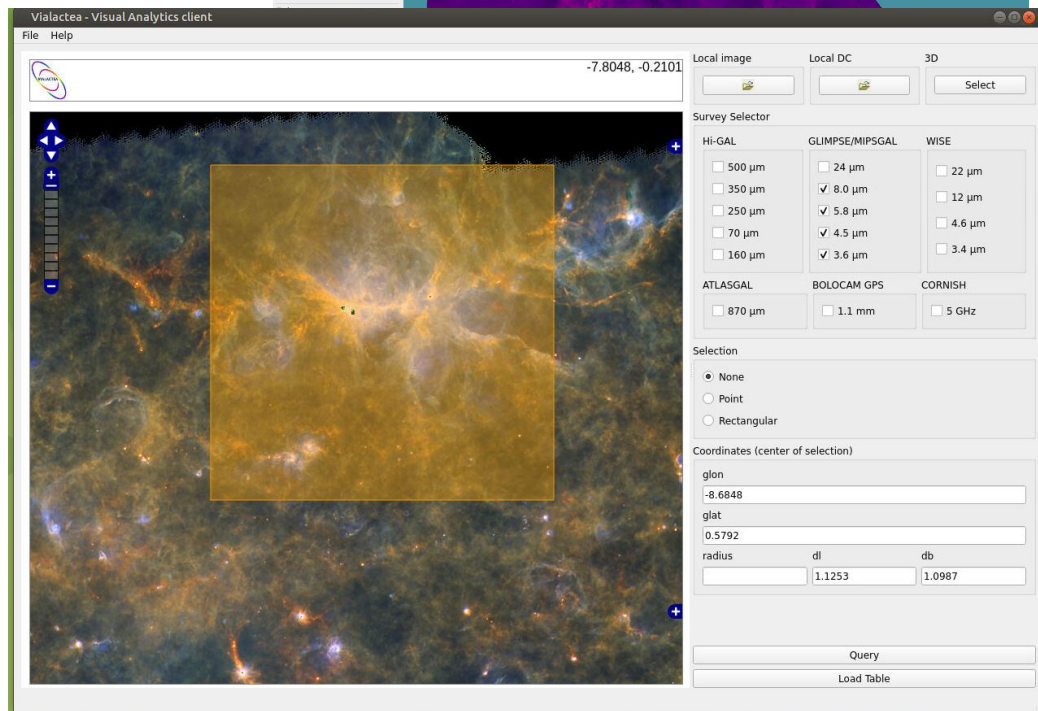
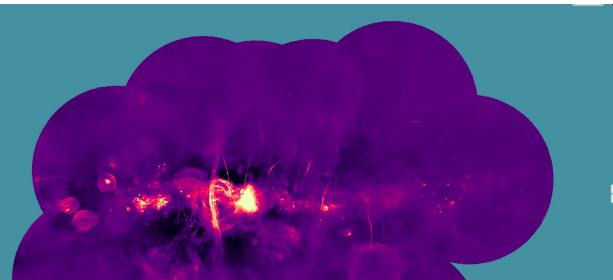
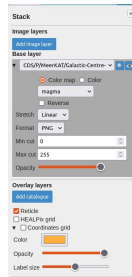
Authentication and authorisation infrastructure federations provide the means to connect users to resources. NRENs have operated (usually national) identity federations for decades and these are interconnected through activities like eduGAIN, but (usually) only cover academic member organisations.

...



Progress - Visualisation

- Comparative review of three tools where teams have expertise: CARTA, ALADIN and visIVO
- Collection of data products (with links) for use in demos
- Demo of these tools to the SRCNet team of teams
- All three tools deployed at CHINA SRC, and access given to external users (user pass, IP address whitelist)
- Next steps: INTERFACES - understand interfaces for these tools, towards developing a common API layer
 - Fit with SRCNet architecture
 - Allow extension to other tools



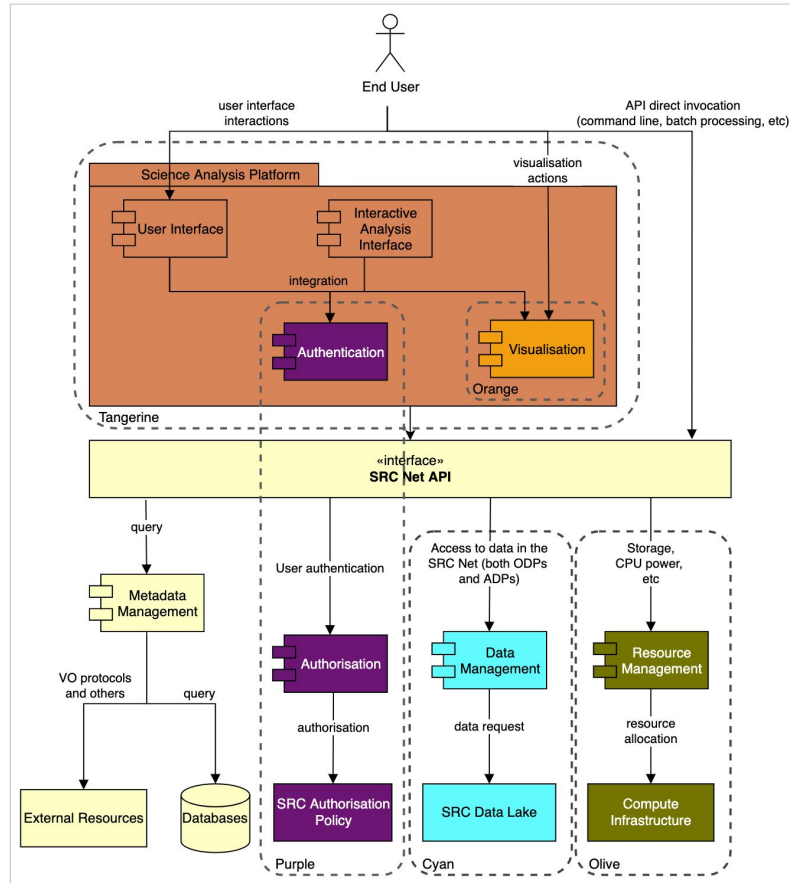
Progress - Science Platform

- Evaluation of (30) existing platforms considering many different criteria

Shortlist of 8 (or so) for further work

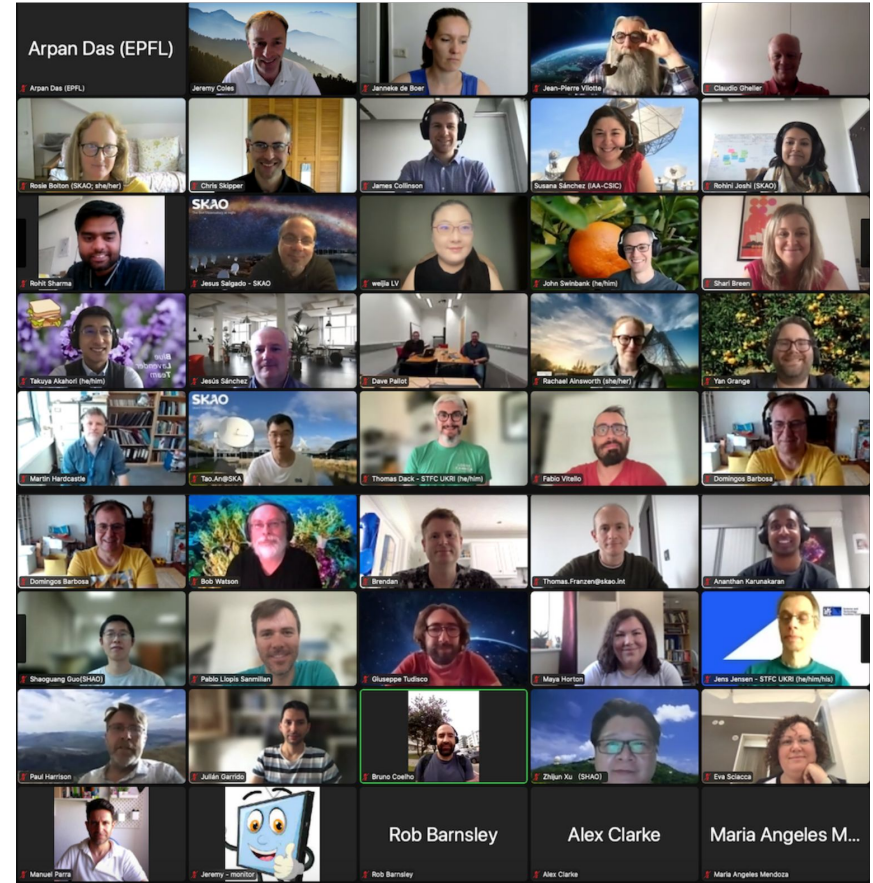
- Science Platform vision document

Next steps are to consider architectural aspects of science platform vision, update vision to incorporate this.

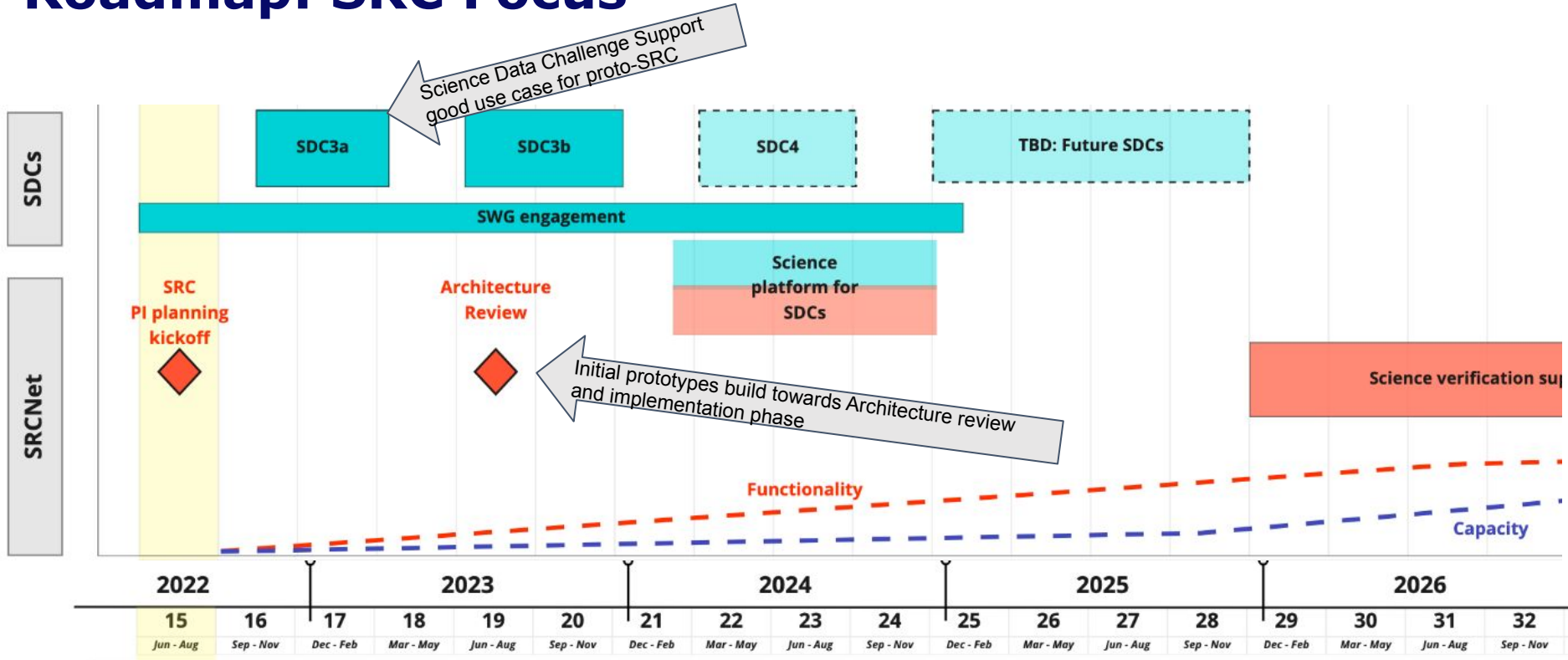


SRC Prototyping: A team of teams

- Adopting Scaled-Agile framework (SAFe)
- Teams are enabled to make their own decisions about work to commit to for 3 months. Members from 12 countries plus SKAO currently
- Program team guides roadmap and helps develop feature ideas - working with team leaders and stakeholders ("Business Owners")
- Same approach as used elsewhere in SKA SW development but we are able to adjust it to suit our different funding circumstances



Roadmap: SRC Focus



End

